

# A.bc1

## WHAT WOULD YOU DO FOR A IMPECCABILITY ?

### High Security & Reliability

- Multi-layered authentication (Face Recognition & Card)
- ZERO FAR/FRR (Bio-Card converged mode)
- Triple Layered Anti-Fake feature
- Highly secured ID card ACC supported
- AES128 / 256 Encryption
- OSDP supported
- Full ISP featured dual camera system
- Secure Element IC built-in
- Anti-Pass back feature built-in
- Tamper proof protection
- IP65 rated water and dust protection

### Flexibility & Compatibility

- Flexible connectivity with controllers and devices through various interfaces
- Operation that couples with readers from other brands
- Supports all kinds of technology cards and custom formats as well as NFC mobile card emulation.
- Supports iCLASS / SE cards optionally

### Versatility

- 3 type operating mode
- Supports Stand-Alone and controller interoperation configuration
- Built-in interlock configuration
- Work as a alarm panel
- Access Control, Time-Attendance and Meal management modes by using various scenarios

### Convenience

- Plug-and-Play installation
- Easy installation by PoE
- Convenient Management – real-time management by Andopen cloud connectivity, management via WIFI, Diagnostics, Self error detection
- Voice output

It is obvious that customers' demands in strengthening security by reducing vulnerability of their system in business operations are growing each year.

Especially in the access control field, even though customers are unwittingly exposed to the weakness of card-based systems, existing biometric products in the market have been failing to be their right alternatives due to FAR (false acceptance rate), limit on the number of users, mandatory enrollment process, difficulty in managing sensitive biometric information, low compatibility and scalability, and high budget.

A.bc1 is specially designed to resolve all those issues above at a single stroke.

Choose A.bc-1 to be free from all your concerns.

Access control terminal A.bc1 is a core product of AIDFACE, an access solution with a destructive concept, that converges face recognition with ID cards. By using A.bc1 with ACC (ID cards with built-in biometric information), customers can upgrade their systems in the easiest way to be 100% secure, efficient and practical.

Through matching actual faces with face images saved in Bio-ID cards, A.bc1 authenticates users with 100% accuracy and 100% success rate, eliminating a cumbersome process of biometric registration. In addition, with AIDFACE solution, no biometric DB is required inside of the system as personal biometric information is stored on the individual Bio-ID card which only end-users have access to, without having to reserve the data elsewhere.

Therefore, the system is more lighter and simpler with unlimited user capacity, setting the organizations free from obligations to manage the sensitive personal biometric information.



Camera performance is crucial when recognizing faces. A.bc1 detects faces in the speed of lightning and analyzes them with the highest accuracy. The perfect ISP (Image Signal Processing) solution with a dual camera system allows A.bc1 to operate in tough lighting conditions such as strong backlight, lowlight, complete darkness, and etc.

Besides, A.bc1's 'Triple Layered Anti-Fake' feature prevents any malevolent access attempts.

Flexibility and scalability are the next indispensable aspects to consider when deploying a new system. A.bc1 integrated with ACU can be used for both direct door control and when operating with an external access control panel.

A.bc1 works perfectly by simply plugging in power when used standing alone, and it acts as a reader by using diverse interfaces when it's connected to other legacy systems.

Including the default OSDP, various communications and over 22 input/output peripherals make A.bc1 interoperate flexibly and effectively with most of the industry-standard legacy systems.

Hence, the customers can leverage their existing investments in the legacy by A.bc1's superior compatibility and scalability.

In terms of design, A.bc1's slim form factor (5cm width) further improves the space efficiency. With IP65, it can be used outdoors safely in any weather, and the waterproof and dust resistant attributes extend the product lifecycle, making the system more affordable and practical. Also, its solid but breathlessly beautiful look will make your place more elegant.

See how easy it is when we, andopen, manage the system with WIFI. Are you curious what other interesting features are unseen? Contact andopen to check out other great features of A.bc1.

andopen  
Biometrics Solution Provider

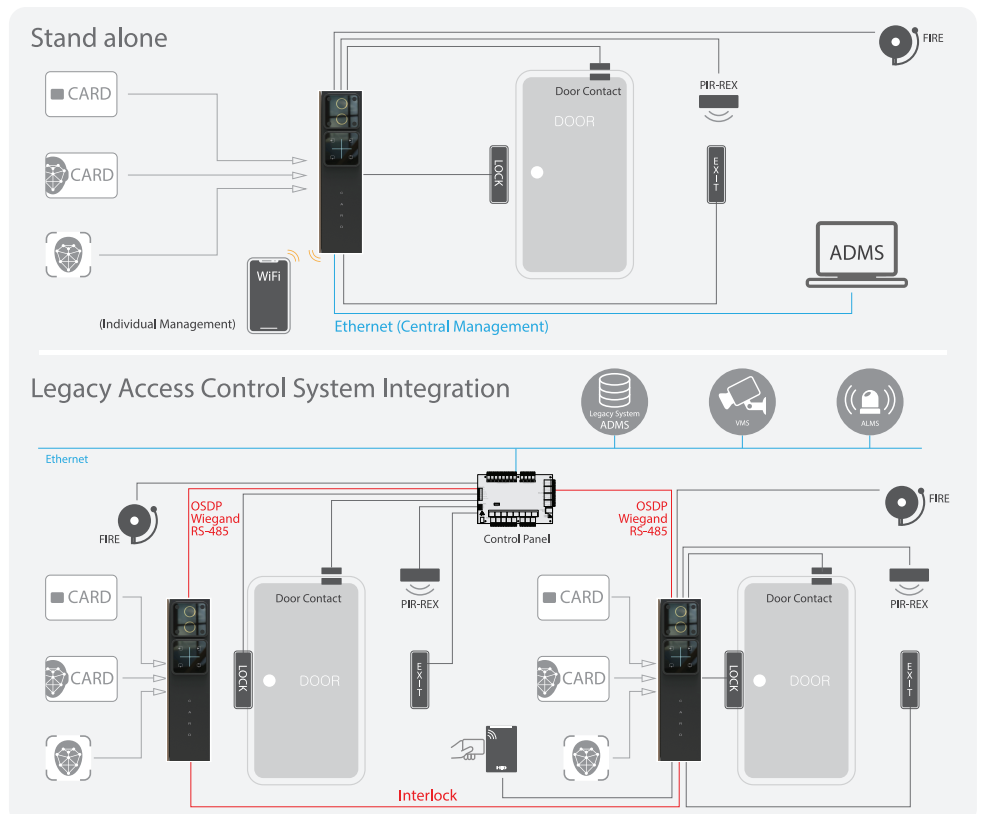


## SPECIFICATIONS

## ANDOPEN ACCESS CONTROL SOLUTIONS

MODELS	A.bc1
CPU	ARM Octa Core
Display	3 Color LED Indicator
Touch Pad	4 touch buttons – Time Attendance
Operation Modes	Card & Face Converged Authentication (Face or Card only modes are available)
Dual Camera	RGB/IR Dual Camera
ISP (Image Signal Processing) Features	Low light, Back light compensation, Auto Exposure WDR (Wide Dynamic Range), HDR (High Dynamic Range)
Anti Fake check (Liveness)	Triple layered fake check (AI, IR and Image Analysis)
Face Recognition method	Both RGB & IR
Face Recognition Range	Up to 3m
Lens / FOV	Fixed focal combined lens / appx. 45° ~ 100°
Accuracy	100% (Card & Face Converged Authentication Mode)
User Capacity	Unlimited
Face Recognition Capacity	Up to 3,000 faces (Face Recognition only mode)
RFReader	13.56 MHz (ISO-14443A/B, ISO-15693)
Tech Cards	ACC / Mifare / DesFire / Felica / Java / NFC / BLE / iClass (Optional)
Communications	Ethernet / WiFi / OSDP / RS-485
PoE+	Yes
Input	Door Status x 2 / Exit Button / RTX / Fire Alarm in (dry & wet) x 2 / Wiegand in / GPI / Hold / Release Alarm
Output	Wiegand / Alarm out / Tamper / Power Fail (Alive) / GPO / Trouble
Lock Control	C-Form relay max. 3A
Video Out	HDMI mini (available only for open framed usage)
Event Log Capacity	500,000 events
Tamper Sensing	Yes
Proximity Sensing	Yes
Speak Out	Voice Out / Beep
Power Input	5V / 3A ~ 24V / 0.8A
Interlock Configuration	Yes
Terminal Configuration	Built in Web Server
Intrusion Preventing	SE(Secure Element) IC built in
Communication Protection	AES 128 / 256 Encryption
Safety	IEC-62471
Operating Temperature	-10° to 60°C
Operating Humidity	0% to 80%
Environmental Rate	IP65
Dimensions (WDH)	50mm x 38mm x 230mm
Connectors	30 pin pig tail / RJ45
Certifications	CE, FCC, KCC
Etc.	Self Diagnostic Function / 24-7 Watch dog / Self Fail Safe Built in Interlock function / Connectivity for LENEL, HID, Mercury etc. Thermal Detector (optional)

## CONFIGURATION



## AIDFACE

Converged Biometrics Solution

andopen Co., Ltd. All rights reserved, andopen, andopen logo, AIDFACE are trademarks or registered trademarks of andopen Co., Ltd. in Korea and/or other countries.

andopen Co., Ltd.

3F, 309, 10, Seongnamdaero 43, Bundang gu, Seongnam-si, Gyeonggi do, Korea.

TEL +82-31-608-0010

FAX +82-070-4855-0270